



We assure best quality!



About Us

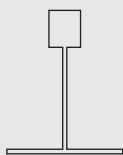
Leading Manufacturers of High Performance Metal Ceiling & Exterior Cladding Systems

Delta Architectural Products have developed an extensive range of suspended ceiling & exterior cladding systems. We continually invest in new manufacturing techniques, equipment and tooling in order to supply our products in a responsive and efficient manner from a quality controlled environment.

Adoption of Environmental considerations, remain the foundation of our business. We take pride in our products, culture and ethos and we look forward to being of service to you.

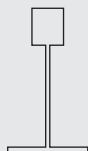


Delta Grid Suspension Systems (T-24 Plain)



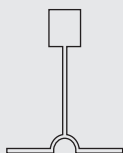
Description	Length	Height	Width	Thickness
Main Runner	3.0/3.6 Mtr	32/38	24	0.3
Cross Tee	1.2 Mtr	26	24	0.3
Cross Tee	0.6 Mtr	26	24	0.3
Wall Angle	3 Mtr	21	21	0.4

Delta Grid Suspension Systems (T-15 Plain)



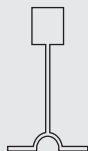
Description	Length	Height	Width	Thickness
Main Runner	3.0/3.6 Mtr	32	15	0.3
Cross Tee	1.2 Mtr	32	15	0.3
Cross Tee	0.6 Mtr	32	15	0.3
Wall Angle	3 Mtr	21	15	0.4

Delta Grid Suspension Systems (T-24 Center Black)



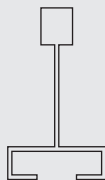
Description	Length	Height	Width	Thickness
Main Runner	3.0 Mtr	32	24	0.3
Cross Tee	1.2 Mtr	32	24	0.3
Cross Tee	0.6 Mtr	32	24	0.3
Wall Angle	3 Mtr	24	24	0.4

Delta Grid Suspension Systems (T-15 Center Black)



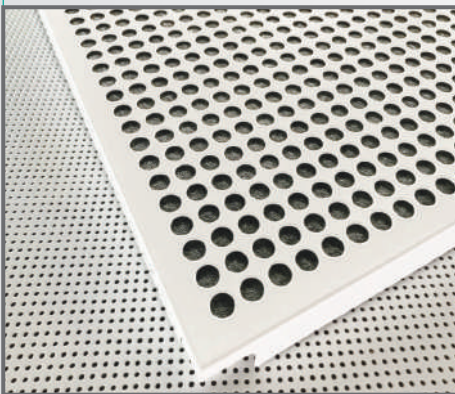
Description	Length	Height	Width	Thickness
Main Runner	3.0/3.6 Mtr	32	15	0.3
Cross Tee	1.2 Mtr	32	15	0.3
Cross Tee	0.6 Mtr	32	15	0.3
Wall Angle	3 Mtr	21	15	0.4

Delta Grid Suspension Systems (T-15 Silhouette)



Description	Length	Height	Width	Thickness
Main Runner	3.0 Mtr	38	15	0.3
Cross Tee	1.2 Mtr	38	15	0.3
Cross Tee	0.6 Mtr	38	15	0.3
Wall Angle	3 Mtr	21	15	0.4





Metal Lay in Ceiling Panel

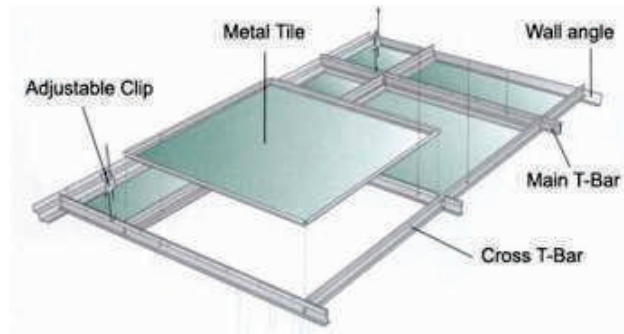
Description

The panels are simply laid on the exposed suspension grid systems, allowing simple and easy access to the plenum. For the lay in system, the tiles have a flange on each end which lays on the exposed grid.

Basic Parameters:

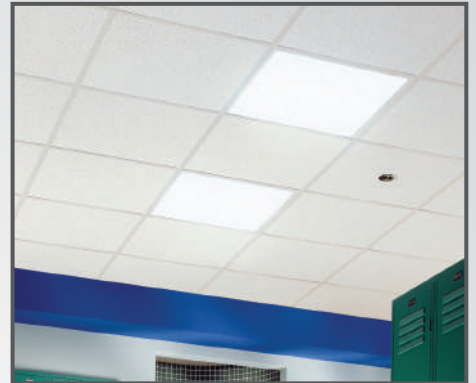
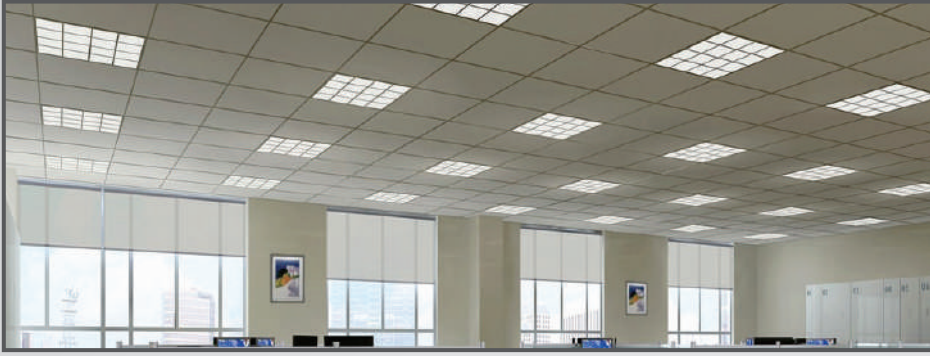
Product	: Metal Lay in ceiling (Perforated)
Available Size	: 600 x 600mm
Thickness	: 0.5 mm
Perforation Dia	: 1.8 mm
Perforated Rate	: 22%
Surface Treatment	: Power Coated
NRC	: 0.55 to 0.75

Instillation :



Application:

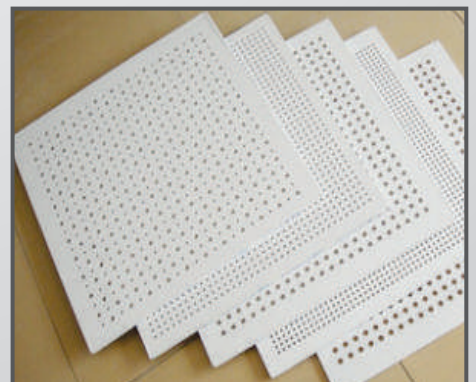
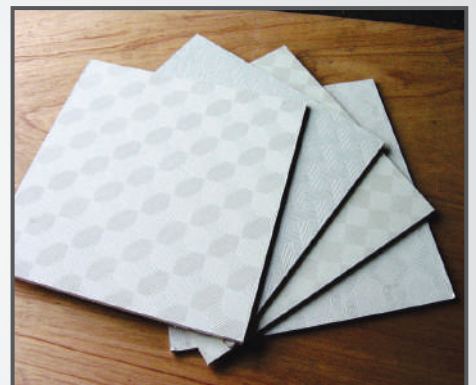
- | | |
|---------------------|-----------------------|
| → Airport | → Laboratory |
| → Cinema | → Marine & Offshore |
| → Computer Room | → Office Area |
| → Exhibition Centre | → Restaurant |
| → Hospital | → Shower Room |
| → Hotel | → Supermarket Theater |
| → Kitchen | |

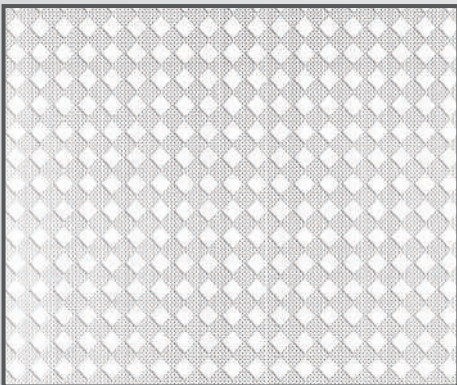
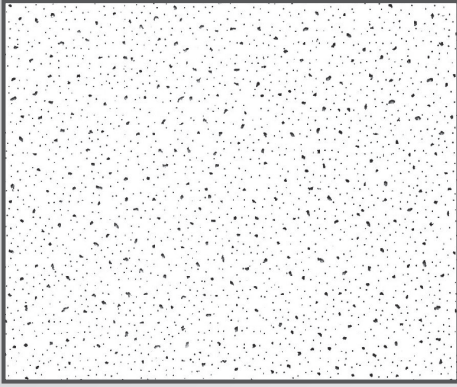


PVC Gypsum Ceiling Tile

Introduction

Giving a stylish and elegant look to your ceiling, this revolutionary product is ideal for maintaining the aesthetics of your spaces. With High water vapour/humidity/fire/corrosion resistance, PVC gypsum ceiling tile is made with superior quality paper-faced gypsum board with a layer of PVC on its surface. The back side of the product is covered by polished aluminium foil. It is absolutely eco-friendly and Biodegradable. With its light weight properties, it is easy to handle and easier to maintain.





PVC Gypsum Ceiling Tile

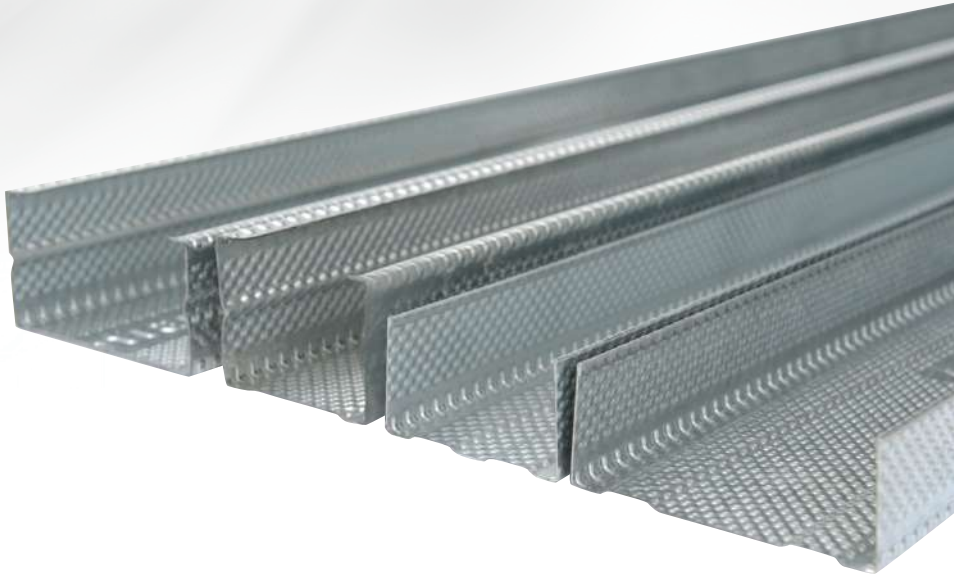
Basic Parameters:

Product	: Vinyl Laminated Ceiling Panel
Size	: 595 x 595mm
Surface Finish visible	: Vinyl Laminated-a hard washable surface that seals moisture, bacteria & odors
Surface Finish back	: Aluminum Foil – Provides good thermal insulation value & reduce Heat Transmission
Core	: Gypsum Plaster
Edge Profile	: Square
Grid	: Exposed, Easily demountable
Weight (kg/m ²)	: 7.2
Colors	: White
K-Value	: 0.16 w/m k
Standard Thickness	: 8 mm (Before Lamination)
Thickness after Lamination	: 8 mm
Thermal Constructive Index	: Average 0.20 w/MK
Thickness Tolerance	: +/- 0.5
Size Tolerance	: +/- 1
Lengthways Raptures Load	: >360 N
Lateral Raptures Load	: >150 N



Dealer Stamp :

info@sutrah.in | www.sutrah.in

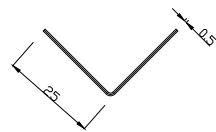


Gypframe profiles

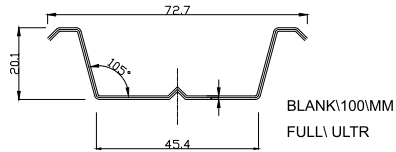
Dimensional Specifications

Introduction

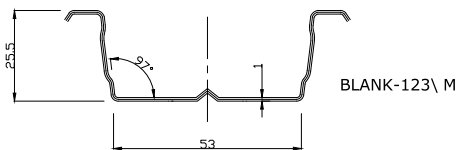
This data sheet contains the dimensional specification of the following Gypframe components – Gypp frame Studs, Gypp frame Channels, CasoLine^{mf}, Gypp Liner, ShaftWall, Gypp Floor, Gypp Rapid Wall, Gypp Frame Steel Angles and Gypp Frame Specialist Profiles. Gypp Frame profiles are cold roll formed in **JSW | explore** utilizing the patented **JSW Steel** process.



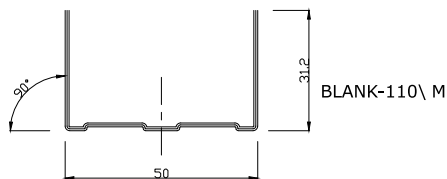
〈 FULL ULTRA ANGLE 〉



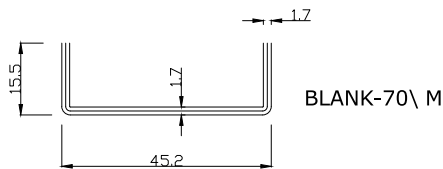
〈 CEILING\ FULL\ ULT 〉



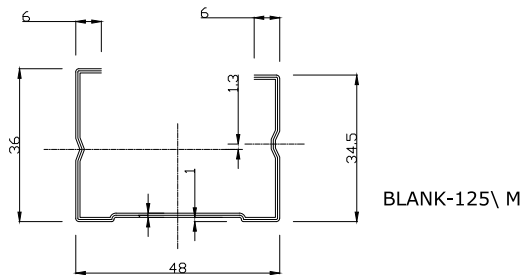
〈 CEILING\ FULL\ ULT 〉



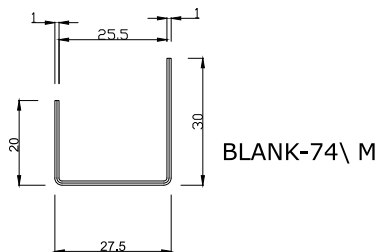
〈 FLOOR\ FULL\ ULT 〉



〈 INTER\ FULL\ ULT 〉



〈 STUD\ FULL\ ULT 〉



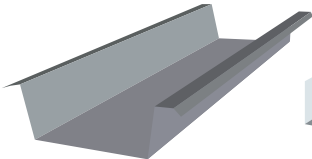
〈 PARAMETER\ FULL\ ULT 〉

Products

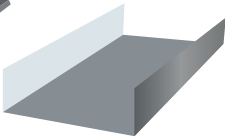


Gypsum Boards

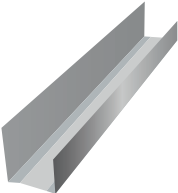
FALSE CEILING SECTIONS



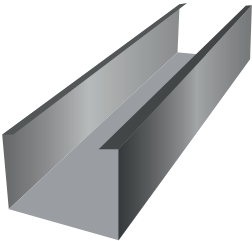
Top Hat Batten



Intermediate



Perimeter



Stud

Available in Embossed



Slit Coil



Gypsum Board Tape



Self Drilling Screws



DELTA INDUSTRIES™

(An ISO 9001:2015 Certified Company)

Plot No. 401 B, Baikampady Industrial Area, New Mangalore - 575 011

Ph : 0824-2409439 | M : +91 99866 81944 | info@sutrah.in | www.sutrah.in